

ControlTec AccuTank Modulating Burner Controller Instruction Sheet 1

DO THIS STUFF FIRST!

1. Mount Controller via two ways:

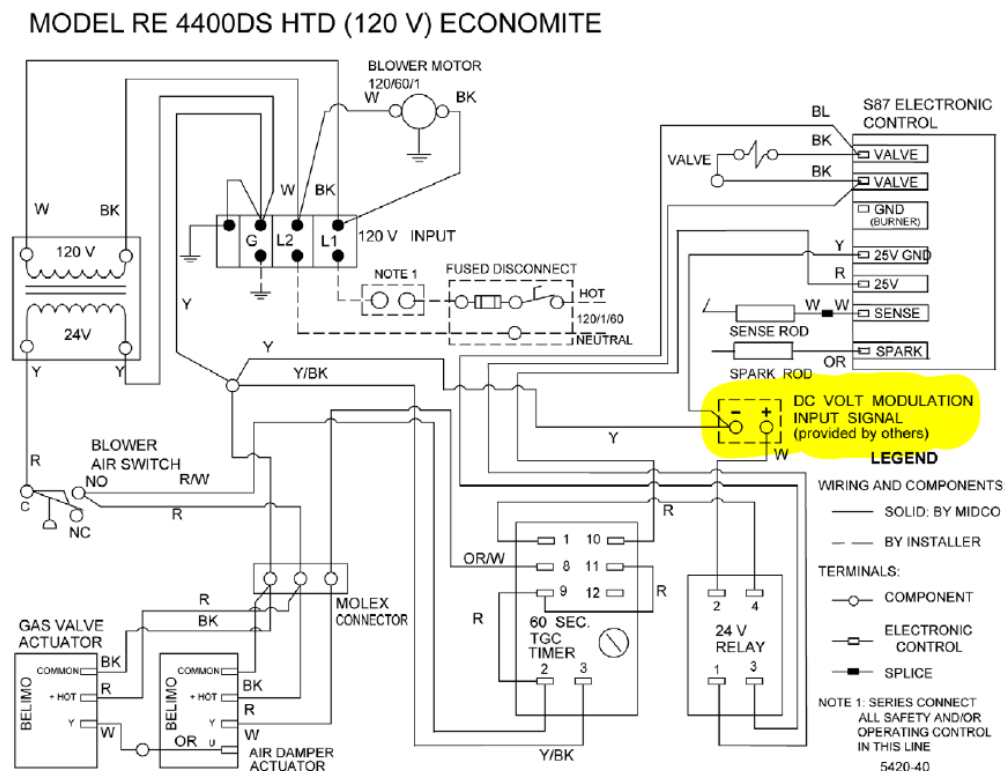
- a. To Unistrut using “Cone Steel Nut” with ¼-20 nylon bolt (included)

Install UniStrut nut into channel with blue part facing control box

Secure box to U.S. nut through hole in back of box. Careful not to over tighten the nylon bolt

- b. Mount to wall

2. Wire the modulating burner wire to the proper terminals at burner. Black is +, Clear is - (Wire provided can be cut to length if needed)



3. Install the RTD temperature sensor in the vessel thermowell.

- a. **Screw in cord grip fitting to the ½” NPT port on vessel.**
- b. **Slide sensor down the thermowell until you feel it bottom out on tip of thermowell**
- c. **While keeping inward pressure on cable, tighten gland nut securely around cable so wire will not pull back.**



4. Power Control Box with 115VAC. — via included power cord or as needed per application.

5. The burner will still need to be fed with 115VAC (120V noted on wiring diagram) to power the blower motor. See upper left of wiring diagram.

This control does not feed that power to the burner

Move on to Controller Set up on Instruction Sheet 2